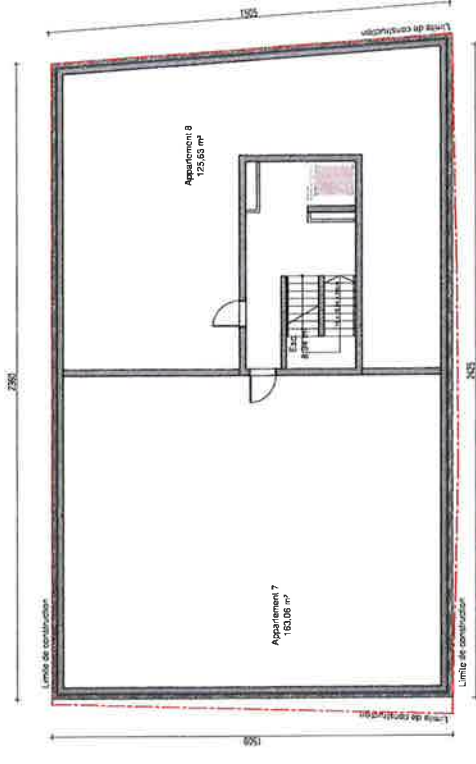


Retrait
 Surface Brute - 160,95 m²
 Appartement 10 - 119,48 m²

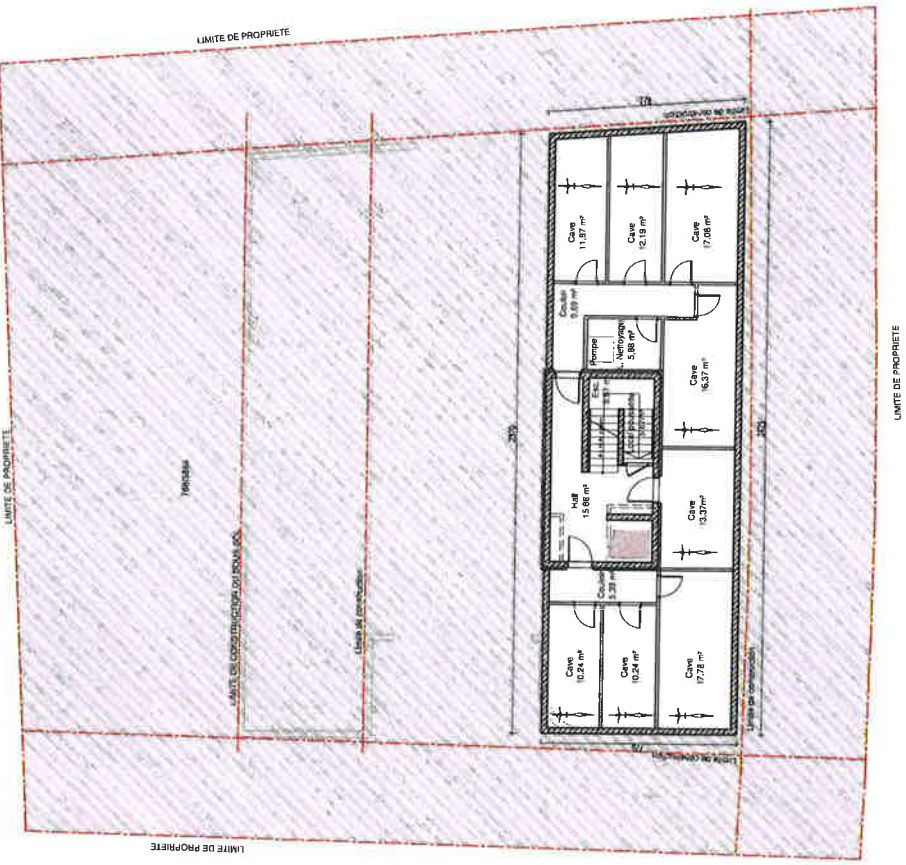
RETRAIT - ECH. 1:200



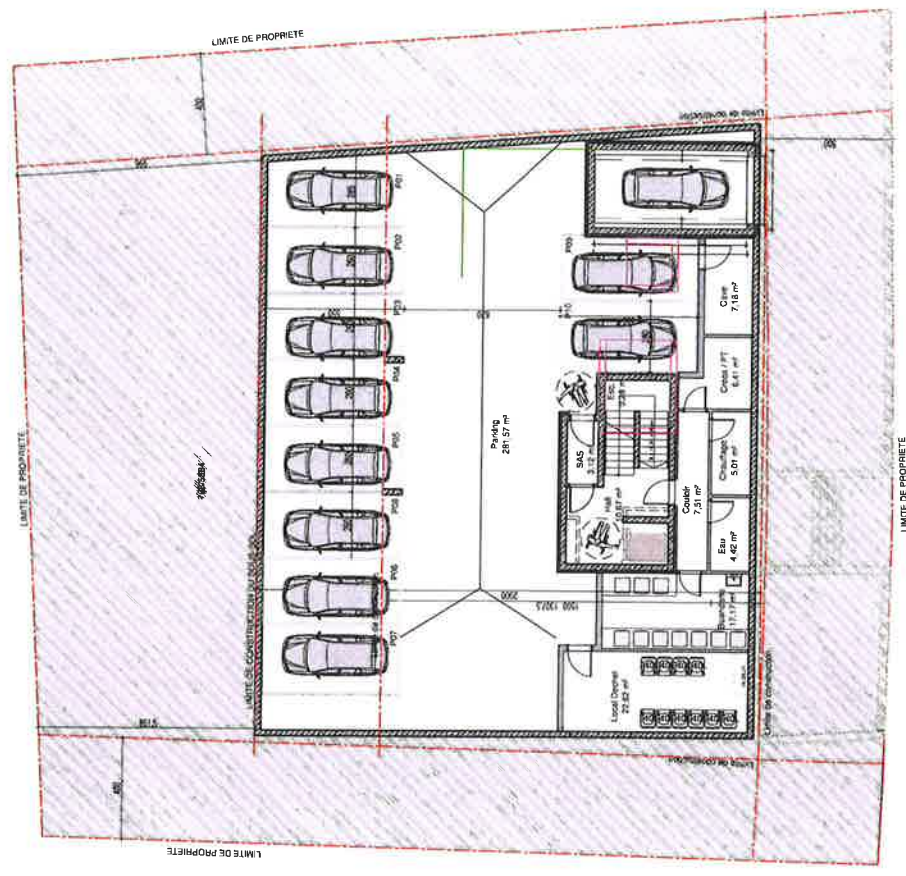
2 Etage
 Surface Brute - 362,16 m²
 Appartement 8 - 147,28 m²
 Appartement 9 - 143,42 m²

ETAGE 2- ECH. 1:200





Sous-sol -2
 Surface Brute - 186,83 m²
 8 Cave



Sous-sol -1
 Surface Brute - 447,51 m²
 10 Parking
 1 Cave
 Creos/Pt
 Chauffage
 Eau
 Buanderie
 Local Dechet

SOUS-SOL -1 - ECH. 1:200

SOUS-SOL -2 - ECH. 1:200

1/200



Total

Surface Brute (hors sol) - 1.290,26 m²(avec RDC*)

Surface Brute (hors sol) - 1.247,26 m²(sans RDC*)

Sous-sol

Surface Brute (sous-sol) - 652,98 m²

Surface du lot - 10,95 ares

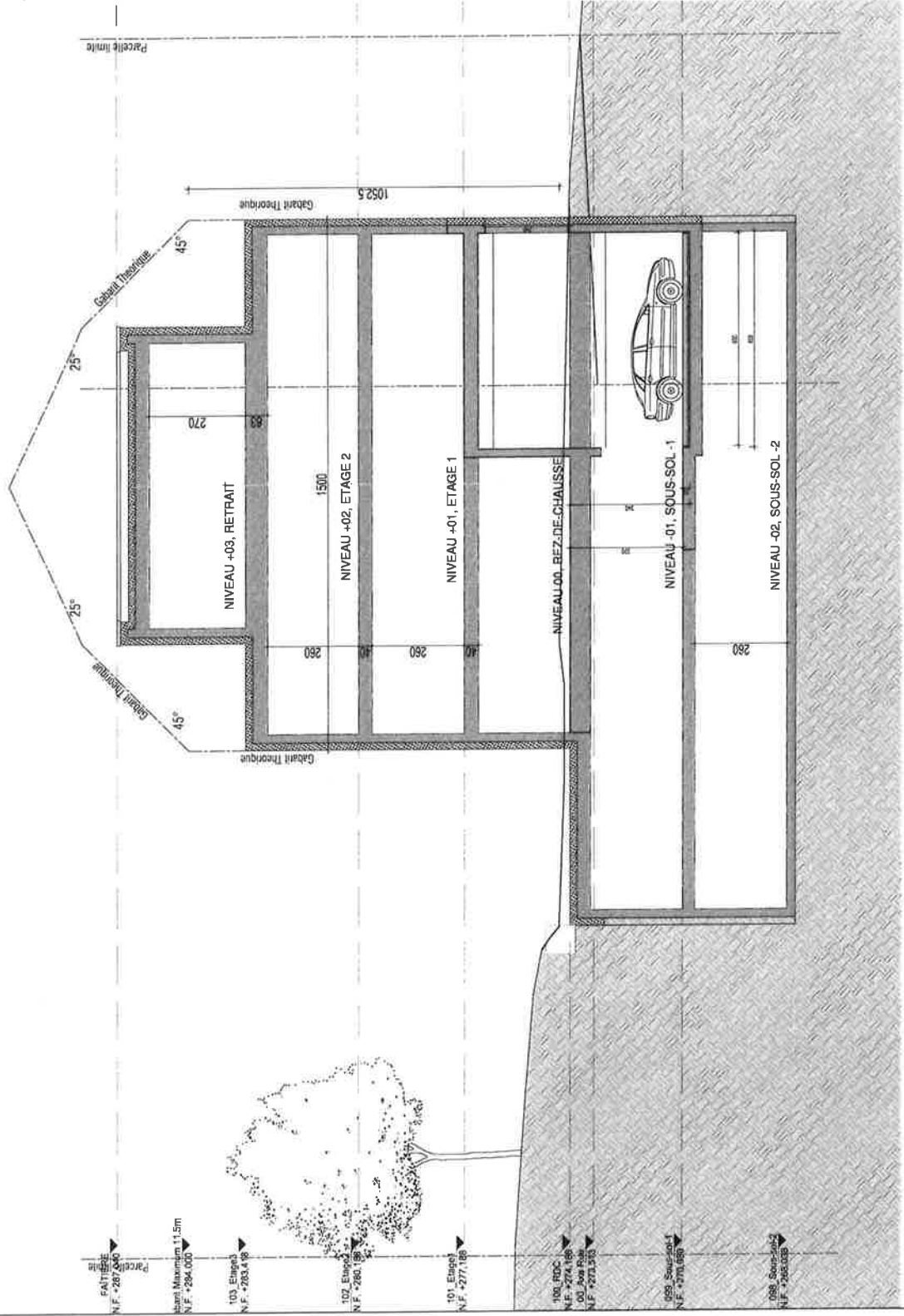
Surface d'emprise au sol - 404,99 m² (avec RDC*)

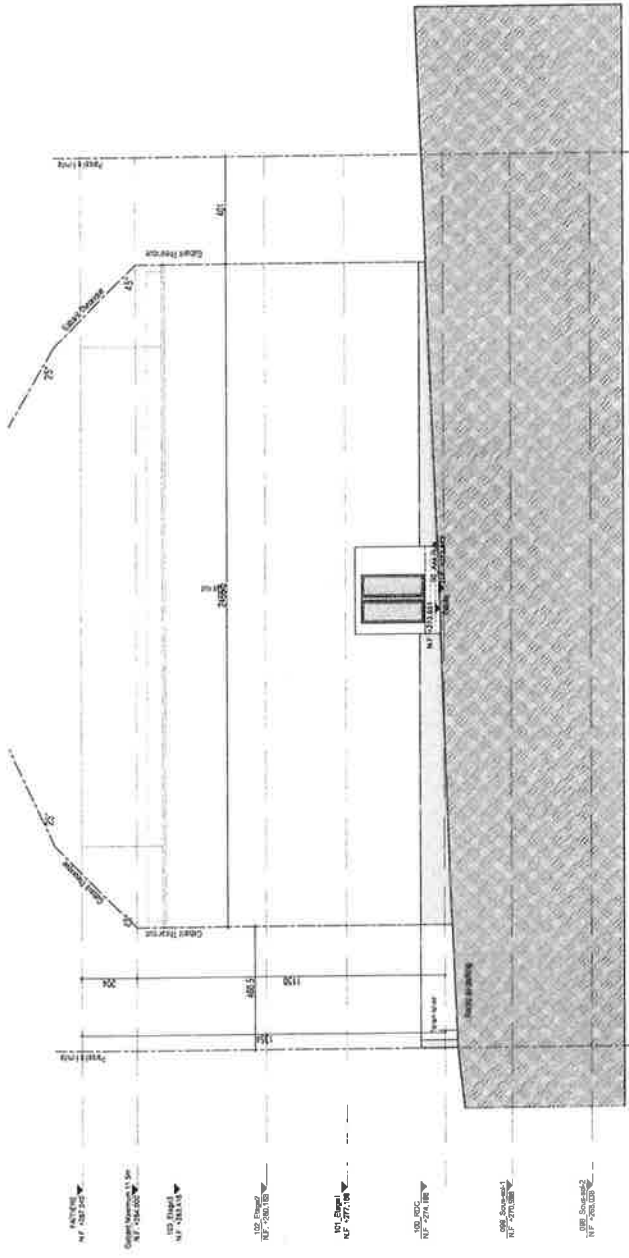
Surface d'emprise au sol - 361,99 m² (sans RDC*)

Type et nombre de logements - 9

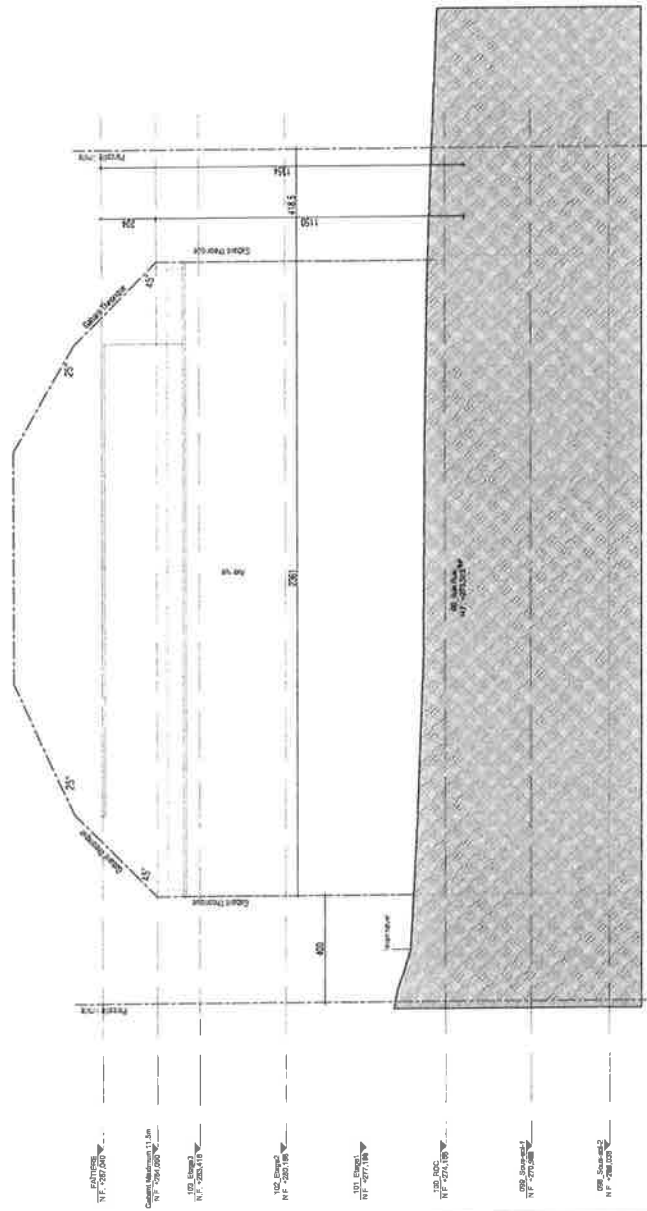
Nombre de niveaux -III +1R

Hauteur des constructions - 11,5m





FACADE EST



FACADE OUEST